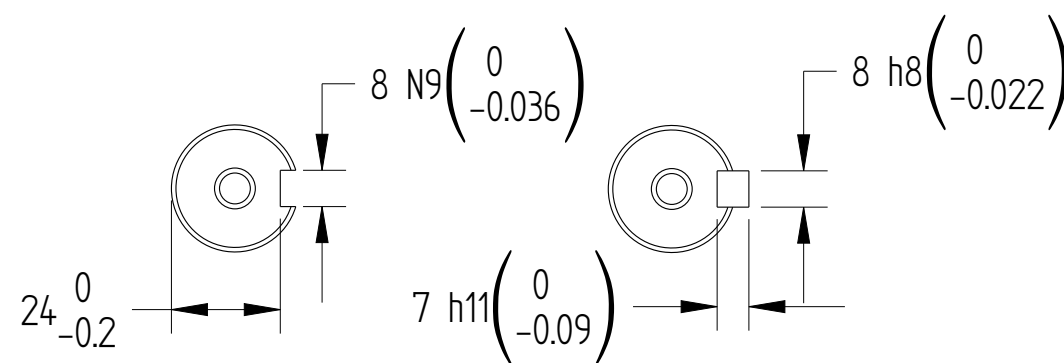
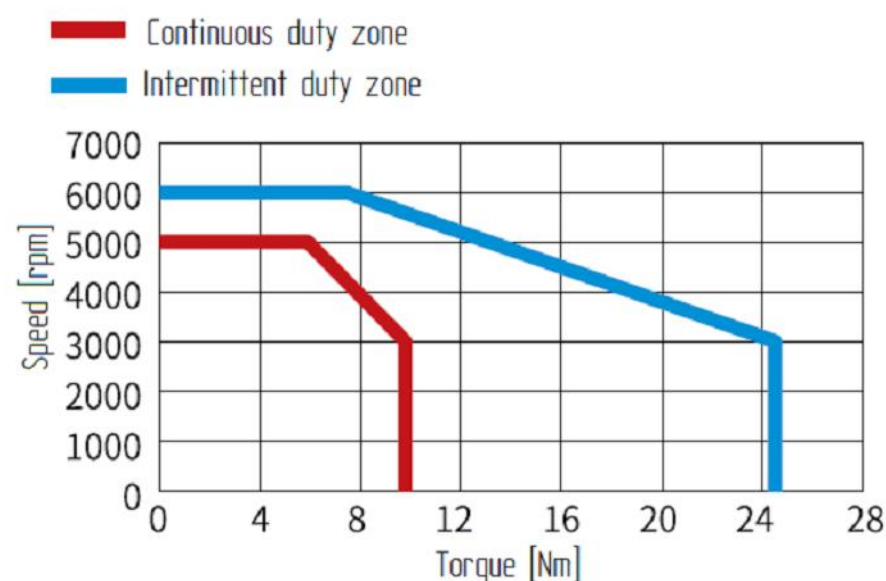
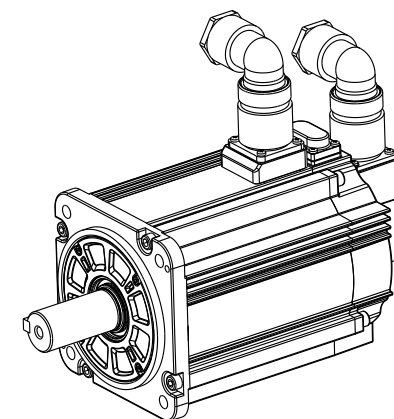


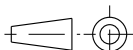
| Basic function parameters | |
|------------------------------------|-----------|
| Rated power KW | 3 |
| Rated voltage V | 220 |
| Rated current A | ≤16.6 |
| Peak current at rated speed A | ≤55 |
| Rated torque Nm | 9.8 |
| Peak torque at rated speed Nm | 24.5 |
| Rated speed rpm | 3000 |
| Max speed rpm | 6000 |
| Rotor inertia kg · cm ² | 9.38± 10% |
| Encoder resolution | 26 |
| Insulation class | F(155℃) |
| Protection level | IP67 |
| Static torque of brake Nm | ≥16 |
| Brake power supply | DC24± 10% |
| Duty cycle | S1 |
| Radial line load N | ≤1176 |
| Axial load N | ≤392 |



Dimension of shaft end

Dimension of shaft end with key



| | | | | | | | | |
|-----------------|---------------|------------|----------|-----------------------|-------|---------|---|-------------------------|
| | | | | Motor Outline Drawing | | | 01117900-WX | |
| B00 | New Archive | / | 20230825 | | | | | |
| Version | Change method | Changed by | Date | | | | | |
| Design | / | | | | | | | |
| Check | / | | | / | | | Mark  | INOVANCE |
| Craft | / | | | | | | | |
| Verify | / | | | | | | | |
| Standardization | / | | | | | | | |
| Approve | / | | | Weight | Scale | Version | Page 1 of 1 | |
| | | | | 11.9kg | 3:5 | B00 | Model | MS1H2-30C30CB-A634R-INT |